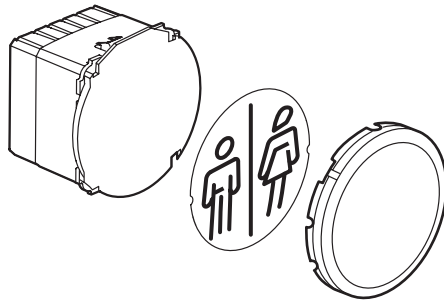


Céliane™
Indicator light


Cat. No(s): 676 51



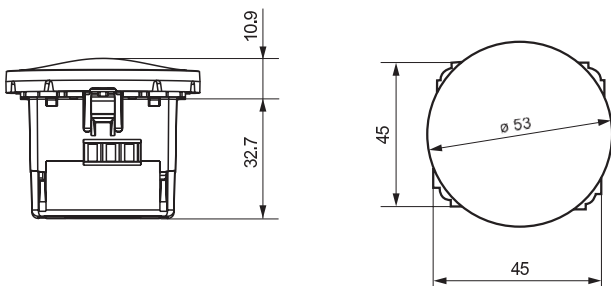
1. USE

LED signalling indicator light with two different lighting levels (lighting/ marking).
Delivered with four colours (orange, green, blue, red), one label holder and a set of ten pictographs for marking.

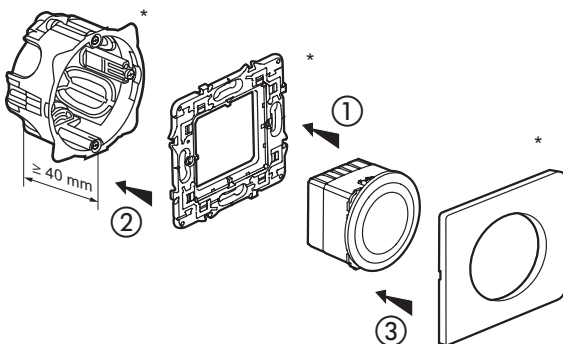
2. RANGE

	Description	Cat. No(s)	Weight (g)
	Indicator light	676 51	36.8

3. OVERALL DIMENSIONS



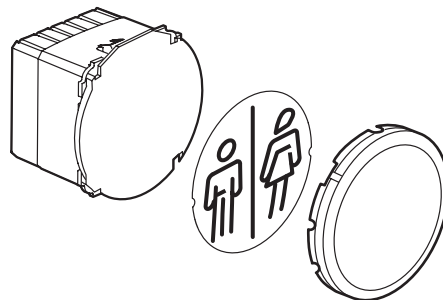
4. FITTING



* not supplied with the mechanism

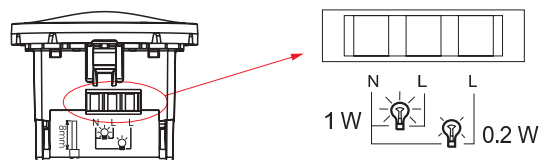
4. FITTING (cont'd)

- 1 - The mechanism is clipped to the support from the front.
 - 2 - The mechanism/support assembly is screwed to the flush-mounting box.
 - 3 - The rocker is clipped to the mechanism.
 - 4 - The plate is clipped to the support.
- Can be fitted with the full range of Céliane finishes.
Vertical or horizontal multi-gang mounting.
A pictograph or colour can be mounted once the protective glass has been removed.



5. CONNECTION

Terminal capacity: 2 x 1.5 mm² or 1 x 2.5 mm²
Tool: flat screwdriver 3.5 mm
or Philips No. 1
or Posidriv No. 1
or mixed Size 0
Stripping length: 8 mm



Indicator light

6. TECHNICAL DATA

6.1 Mechanical characteristics

Impact tests: IK 04

Penetration by solid/liquid bodies: IP 41 (C15-100)

6.2 Material characteristics

Base: Polycarbonate

Indicator light: Polycarbonate


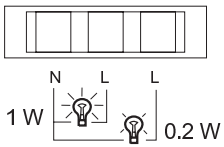

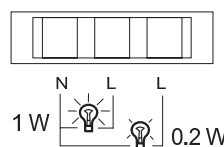
6.3 Electrical characteristics

Self-extinguishing: 650°C / 30 s

Voltage: 230 V

Frequency: 50 - 60 Hz

Power:

0.2 W	1 W
 	 

6.4 Climatic characteristics

Storage temperatures: -10°C to +70°C

Operating temperatures: -5°C to +50°C

6.5 Brightness levels

Brightness levels in candela per m²

- In high brightness position: 1,700 cd /m²

- In low brightness position: 350 cd /m²

7. CLEANING

No cleaning